

SAME Rules and Start time For
Sunday MAY 20 Brussels

AB CONNECTION ANTIQUE TRACTOR PULL TRACTOR CLASSES

Saturday August 25, 2012
HWY 42 & Cty D
Alaska, WI, 54201

Weigh In 9-11:30
Pull Starts at Noon
Tractor Tracks Eliminator

Weight Classes:

Pure Stock- 3200, 3500, 4000, 5000, 5500, 6000, 6500, 8500
Antique Improved- 3500, 4500, 5500, 6500
Hot Antique- 4700, 5700, 6700
Antique I 4500 Magneto only 1938 and older
Team Pull - 9000, 12000, 17000
Antique Crawler Class (NO crawler class for Brussels)

Antique classes are from 1957 and older no TA Use Allowed



*Awards 1st thru 5th
in Individual classes
and 1st thru 3rd
for Team classes.

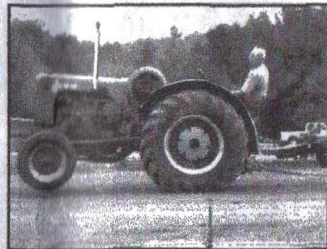


Directions:

Alaska is between Algoma & Kewaunee
on Hwy 42 along the Lake Shore
Approx. 30 Min. from Green Bay

For more information call:

Roger Teske 1-920-388-2147
Mike Kinnard 1-920-680-6350
Marty Baudhuin 1-920-468-6238
Greg Le Ferve 1-920-737-3243



May 11 2012

A-B CONNECTION PULL RULES

- 1) SAFETY FIRST!! DRIVE SLOW, LOOK AROUND WATCH OUT FOR OTHERS!!
- 2) REGISTRATION SHEET FILLED OUT & SIGNED. DRIVER MINIMUM AGE 16 WITH GUARDIAN CONSENT AND FARM SAFETY CERTIFICATION.
- 3) TRACTORS MAY PULL TWICE. NO HOT ANTIQUE IN PURE & IMPROVED CLASSES!
- 4) NO STRIPPING DOWN TRACTORS TO MAKE WEIGHT.
- 5) NO MASSEY 44, OLIVER 88, FARMALL M, MINN U/UB, MUST PULL 5500# AND UP WEIGHT CLASS!
- 6) FENDERS ARE MANDATORY! ALL CLASSES!!
- 7) HOT ANTIQUE CLASS REQUIRE ALL SAFETY EQUIPMENT! SAFETY EQUIPMENT URGED IN OTHER CLASSES BUT NOT REQUIRED.
- 8) DRAW BAR HEIGHT 18" AND MUST BE BACK 18" FROM CENTER OF REAR AXLE. MUST BE EQUIPPED WITH CLEVIS OR PULLING EYE WITH 2-1/2" ID. NO FLOATING DRAW BARS MUST BE LOCKED IN PLACE. THIS APPLIES TO 3 POINT HITCHES ALSO.
- 9) PURE STOCK CLASS REQUIRES FACTORY DRAW BAR. FACTORY WHEEL WEIGHTS OR FACTORY BOLT ON WEIGHTS. NO WEIGHT BRACKETS ALLOWED.
- 10) PURE STOCK CLASS PULLS 1ST GEAR ONLY. ANTIQUE IMPROVED PACED AT 4 MPH. 1 HORN BLOW WARNING! 2ND BLOW DQ! HOT ANTIQUE NO PACE.
- 11) TIRE SIZES 5000# AND UNDER 15.5-38
5001# AND UP 18.4-38
- 12) RPM LIMITS TO WITHIN 10% IN PURE STOCK & IMPROVED CLASSES. HOT ANTIQUE TO BE MONITORED BY TRACK OFFICIALS. GOVERNOR REQUIRED I NO STRINGS, WIRES, ECT.
- 13) NO TORQ, MULTI POWER AND SHIFT ON THE GO IN ANTIQUES/ CLASSIC FARM TA ALLOWED
- 14) NO ALCOHOLIC BEVERAGES FOR PARTICIPANTS!!
- 15) STOCK BLOCKS REQUIRED FOR MAKE AND MODEL.
- 16) DRIVERS BUTT STAYS IN SEAT WHILE PULLING.
- 17) NO ALCOHOL FUEL & NITROUS INJECTION ALLOWED ON STOCK AND IMPROVED CLASSES. HOT CLASS ANY FUEL ALLOWED.
- 18) NO TURBOS
- 19) ANTIQUE I 4500# MAGNETO ONLY AND MUST BE 1938 AND OLDER
- 20) ANTIQUE CLASSES ARE FROM 1957 AND OLDER. FARM CLASS 1956-1960
- 21) ANY QUESTIONABLE CONCERNS ARE UP TO TRACK AND PULL OFFICIALS. OFFICIALS DECISION IS FINAL!